




# THE BOYUM PACK

The **Boyum Pack** from Boyum IT is a package of stable, powerful modules that work independently to bring flexibility and productivity to SAP Business One customers and partners alike.

With the **Boyum Pack** SAP Business One Consultants and Sales People will have a single add-on with almost limitless capabilities. Imagine an add-on that combines Boyum's world class functionality and stability, but that enables you, the partner, to introduce your own functionality and create a single, universal add-on that will fulfill the needs of your entire customer base. No more searching for and implementing multiple (and often incompatible) add-ons for your projects. The **Boyum Pack** is the panacea for SAP Business One partners.

- **B1 Usability Package**
- **B1 Print & Delivery**
- **B1 Budget**
- **B1 Document Manager**
- **B1 Time Task**  Available from version 5.0
- **B1 Mailchimp**

*“ We have worked with Boyum Usability and Productivity for more than a year, and we continue to be amazed at its sheer versatility. The ‘Document Manager’ and ‘Print and Delivery’ modules have enabled us to convert to a completely paperless workflow. Simply put, Boyum is the only add-on we couldn’t live without. ”*

Hillel Sackstein, President, Virtual Graffiti Inc.

The **Boyum Pack** is an extension of the B1UP. Therefore, to benefit from the new modules you must first have the B1UP in place. Modules can be purchased as required and, like the B1UP, are chargeable based on the number of users.

The **Boyum Pack** utilizes Crystal Reports across all documents, providing you with unprecedented control and visibility; the ability to tailor documents and reporting to the specific requirements of each and every customer.

# B1 USABILITY PACKAGE

## Quick and Easy Customization

### Function buttons

Applies buttons on every window, which enables you to make shortcuts, automate business processes and easy the navigation through SAP Business One.

### Mandatory fields

Make every field in SAP Business One mandatory, enhancing the data quality and ensuring no data is forgotten.

### Item Placement Tool

Screen designer functionality where you can redesign every form in SAP Business One. Relocate and hide fields and tabs, enabling that SAP Business One can be customized to suit the individual customers business and processes.

### Add & Edit Menus

Create your own menus or rename the existing ones. Make the menu suit your customer.

### Tab Control

Define a new tab order in your SAP Business One. Making the entering of data in SAP Business One faster.

### Default Data

Set additional default data for business partner and items, hereby enhancing the user friendliness of SAP Business One.

### Toolbox

A range of 40+ functionalities which enhances the general usability in SAP Business One. E.g. <Enter> in a document will send the cursor to last empty row and not add the document.

### Template system

Create snapshots of current data for any window and store them as templates for easy creation of master data and execution of reports. Often used to create and manage different customer and item groups.

### Quick Create

Enables you to create a new item or business partner on the fly in a simple form, making the user able to focus on the business here and now and not on SAP Business One.

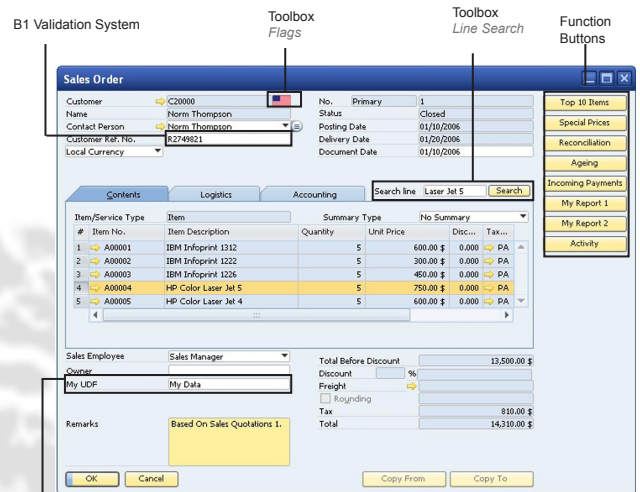
### Make Items Read Only

This module allows you to define items that are read only for any windows in SAP Business One.

## Enhancement Modules

### B1 Search

Search functionality which allows you to search up to 14 different windows and on row level on documents, enabling the customer to find the relevant information fast and efficiently.



### Recurring invoices

Enables the SAP Business One to handle invoices which need to be send recurrently. E.g. rent, maintenance, subscriptions. Giving a solid overview of expected income and already invoiced amounts.

### PLD Extension

Import and Export print layout designer report layouts to XML.

### Letter Merge

Merge data from Business Partner Master Data with you own Microsoft Word (2003/2007/2010) templates. Single or mass letter merge. CRM is enhanced through the possibility to add activities connected to the merge.

### Exchange rates

Online update of exchange rates via the ECB (European Central Bank) or 4 other global providers.

### Account Balance

Create account balance (BP statements) reports for customers/suppliers in PDF.

## On Site development

### B1 Validation system

Defines triggers, can control different conditions and launch Universal Functions. The systems allows consultant to perform minor developing tasks directly on site.

### Universal Functions

A range of functions which can enhance the use of SAP Business One. Common is that these functions needs a trigger, either B1 Validation System or Universal Functions.

### Master Data Manager

With the master data manager you are able to perform administration and maintenance tasks on common master data in the current database as a batch. This is done without the need for external tools like Data Transfer Workbench.



SAP Business One without B1 Usability Package



SAP Business One with B1 Usability Package

# B1 PRODUCTIVITY PACKAGE

The B1 Productivity Package currently has the following modules, with numerous modules to be added subsequently.

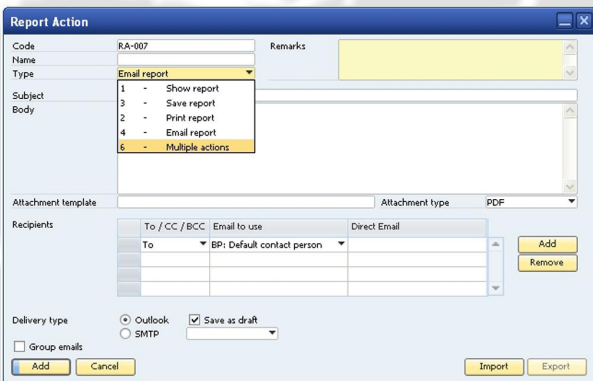
All modules can be activated in the B1UP Configuration. Remember to have the latest version of B1UP installed.

## B1 Print & Delivery

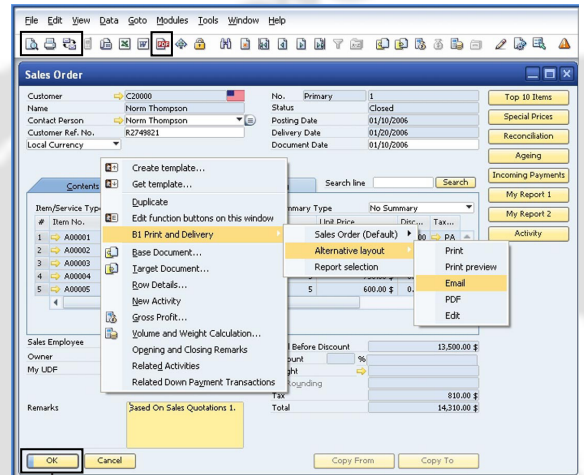
Crystal Report is the worlds most used reporting system and it is available to all SAP Business One users. SAP has acquired Business Objects who are behind Crystal Report, which means that SAP has gained the userfriendly interface to Business Intelligence which was needed.

B1 Print & Delivery is advanced Crystal Report integration enabling users to email Marketing Documents and Account statements from SAP Business One via Outlook, saving them eons of time and briefcases of money.

By activating one Crystal Report, users can manage all Marketing Documents making the Print & Delivery the ideal tool to customize your customer's system in a quick, easy and profitable way.



Each single action you can do with a report can be customized in details with the powerful report action configuration. You can set up individual actions or group them together in a multi-action (Example: print and email with one click).

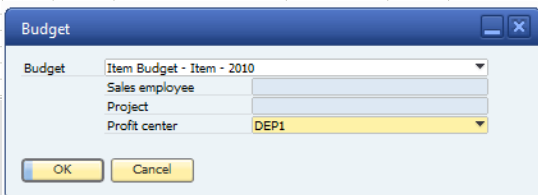
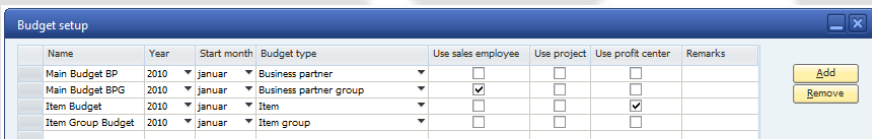


Print during "add"

B1 Print & Delivery can take over the entire document handling process for sales and purchase documents. You have the option to control each of the delivery methods (Print, show, Email, PDF and add document). You can also work with multiple layouts of different business partners or on the fly choose a different layout.

## B1 Budget

In SAP Business One you can make budgets on accounts. With B1 Budget you can now also make budgets on customers and items and run Budget reports detailing Management and Sales. This means that users can easily see which part of the business are on budget and which parts are not. Customer budgets and Items budgets can be made on customer/item group level and/or directly at customer/item level.



## B1 Document Manager

B1 Document Manager (B1DM) is a tool for companies wishing to monitor their attached files more closely (e.g. ISO certifications) and enrich them with associations to SAP projects, profitcenters, documents etc. B1DM enables you to administer documents outside SAP Business One on a designated server, but you can still find these documents in SAP Business One.

This is made possible by B1DM's highly configurable keyword system which allows users to create predefined and custom search-terms for files located in business partner and item folders. By doing so it is possible to search for specific documents that are placed inside the SAP Business One database AND in a designated folder on a server.

**Attach document**

Link: Business Partner | C20000 | Norm Thompson

New file

Create as copy

Template: Standard Contract

Metadata: Profit Center, Project: Med Constructions abc, Document: Quotation, ISO-No: 1234

Preview folder: C:\B1DM\BP\C20000 - Norm Thompson

Preview file: Contract\_PRO\_PRJ02\_ISO\_1234.docx

Buttons: Save file, Cancel

**Search documents**

Search type: Business Partner | C20000 | Norm Thompson

Profit center: Med Constructions

Search options: Date - From, Date - To,  Search in files,  Search in SAP

Type	Id	Details
A/R Invoice (1)	232	Norm Thompson - Ref 1234
Files (1)	Contract.docx - C20000 - Norm Thompson	C:\Documents and Settings\mtef\skrivebord\C2

Buttons: Search, More, New document

# B1 PARTNER LOGIC

## Your Logic - Our Quality

B1 Partner Logic enables our partners to submit their own logic to be integrated into the Boyum Pack offering. We will quality assure the stability of your logic within the Boyum Pack environment and provide all upgrades and maintenance.

As a result, your customer's requirements will be addressed while maintaining the Boyum seal of quality, and it will be housed within one SAP Certified add-on.

To be part of the program, contact Mikael Boyum ([mb@boyum-it.com](mailto:mb@boyum-it.com))



### ABOUT BOYUM IT:

Boyum IT was established in 1997 and is today one of Scandinavia's leading SAP Business One development and consultant houses. Since the beginning our philosophy has been to offer professional users a great and safe IT solution with high reliability and security. Boyum IT has subsidiary companies in Norway, Finland, Germany and USA and has a sales office in London.

### TRY B1UP FREE

Start a 20-day free trial on:  
[www.boyum-it.com/sap\\_b1up/free\\_trial/](http://www.boyum-it.com/sap_b1up/free_trial/)

### WATCH AND LEARN

E-Learning for all modules:  
[service.boyum-it.com](http://service.boyum-it.com) or  
<http://youtube.com/boyumit>



### THE BOYUM PACK TEAM:

Mikael Boyum, CEO  
Rasmus Wulff Jensen, CTO  
Niels Hermansen, COO  
Mads Madsen, Channel Manager (global)  
Dan McLachlan, Channel Manager (UK, RU)  
Eva Walther, Channel Enabler (DACH)

[mb@boyum-it.com](mailto:mb@boyum-it.com)  
[rwj@boyum-it.com](mailto:rwj@boyum-it.com)  
[nh@boyum-it.com](mailto:nh@boyum-it.com)  
[mhm@boyum-it.com](mailto:mhm@boyum-it.com)  
[dan@boyum-it.com](mailto:dan@boyum-it.com)  
[kew@boyum-it.com](mailto:kew@boyum-it.com)

**boyum**it

Boyum IT A/S  
Egsagervej 11  
DK-8230 Aabohoej  
[www.boyum-it.com](http://www.boyum-it.com)